



20 Staward Avenue

Seaton Delaval, Whitley Bay NE25 0JG

- Semi Detached House IDEAL INVESTMENT.
 - 17ft Living Room
 - Kitchen
 - Bathroom
 - Garage
 - No Upper Chain
 - Dining Room
 - 3 Bedrooms
 - Updating Required
 - Gardens to Front & Rear

£189,950

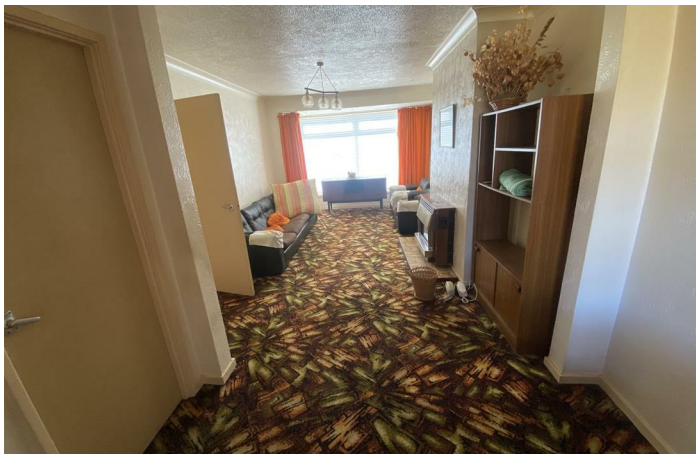




***** IDEAL INVESTMENT, REQUIRES MODERNISATION*****

Situated in a lovely position on Staward Avenue, offered for sale with No Upper Chain is this Semi Detached House. Priced to reflect some updating. Located close to local amenities including the Newly opened Northumberland Trainline and the new 'Super' school due to open later this year.

Briefly comprising Entrance Porch, Reception Hallway, Lounge to front, square arch to Dining Room, Kitchen with wall and floor units, door leading to a Utility Area with access to rear garden. To the first floor there are 3 Bedrooms, Bathroom with panelled bath and wash hand basin, separate low level w.c. Externally to the front there is a walled garden and driveway leading to a garage with up & over door. To the rear there is a lovely sized lawned garden.



Entrance Porch

Reception Hallway

Lounge

17'2 x 11'1

Dining Room

10'10 x 8'4

Kitchen

10'5 x 9'3

First Floor Landing

Bedroom One

14'1 x 9'11

Bedroom Two

11'5 x 9'0

Bedroom Three

10'7 7'8

Bathroom

Separate W.C

Externally

Disclaimer

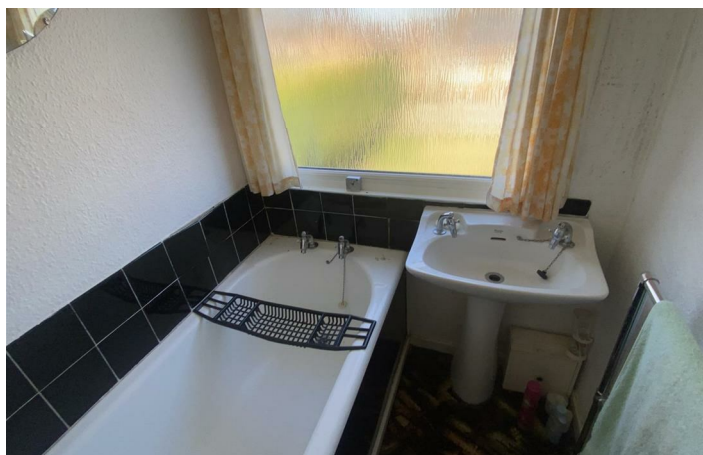
DISCLAIMER:

ML Estates Ltd endeavour to maintain accurate descriptions of properties in Virtual Tours, Brochures, Floor Plans and descriptions, however, these are intended only as a guide and purchasers must satisfy themselves by personal inspection.

All rooms have been measured with electronic laser and are approximate measurements only. None of the services to the above property have been tested by ourselves, and we cannot guarantee that the installations described in the details are in perfect working order.

ML Estates for themselves, the vendors or lessors, produce these brochures in good faith and are a guideline only. They do not constitute any part of a contract and are correct to the best of our knowledge at the time of going to press. Pictures may appear distorted due to enlargement and are not to be used to give an accurate reflection of size. All negotiations and payments are subject to contract.

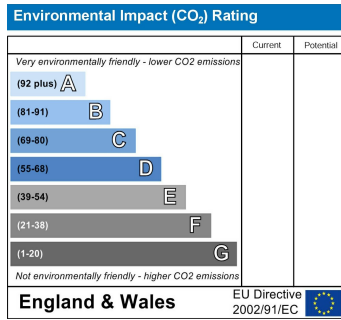
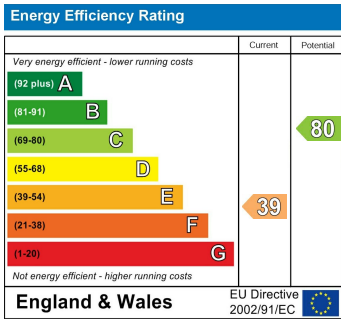
The Tenure of the property should be clarified by your legal representative prior to exchange of contracts







Local Authority Northumberland County Council
Council Tax Band B
EPC Rating E
Tenure Freehold



ML Estates Sales Office

27 Avenue Road, Seaton Delaval, Tyne
 And Wear, NE25 0DT

Contact

0191 237 60 60
 sd@mlestates.co.uk
 www.mlestates.co.uk/

Agents Note: Whilst every care has been taken to prepare these particulars, they are for guidance purposes only. All measurements are approximate and for general guidance purposes only and whilst every care has been taken to ensure accuracy, they should not be relied upon and potential buyers/tenants are advised to recheck the measurements.